


Insulated Platform IW

Nominal voltages up to
17.5 kV / 15 ... 60 Hz

PROTECTIVE AND AUXILIARY EQUIPMENT

based on DIN VDE 0681 Part 1

- Not for use in wet weather 
- Equipment for live maintenance and repair work at airport lighting systems
- Insulated platform for insulating standing surfaces
- Continuous, fluorescent limit mark indicates maximum permissible height for plants when used in green spaces and can be used as reflector at night
- Two removable kneeling cushions for comfortable working
- Replacable skids for easy positioning and transport



Replacement of a faulty illuminant (airport lighting system) at a runway.

Application

The insulated platform and the GRP extension are used for e.g. replacing illuminants at airport lighting systems under live conditions.

The insulated platform insulates the standing surface during live working. The GRP extension is used as insulating intermediate section between the ratchet (with 13 mm square) and operating head (e.g. 17 mm socket).

Requirements

Maintenance and repair work exceeding 1 to 36 kV may only be performed under the supervision of a skilled person in accordance with EN 50110-1 "Operation of Electrical Installations – Minimum Requirements", Sections 6.3.1 to 6.3.12. In Germany sections BGV A3 and BGR A3 of the national accident prevention regulations (UVV) "Elektrische Anlagen und Betriebsmittel" [Electrical installations and equipment] issued by the German Employer's Liability Insurance Association for Precision and Electrical Engineering apply.

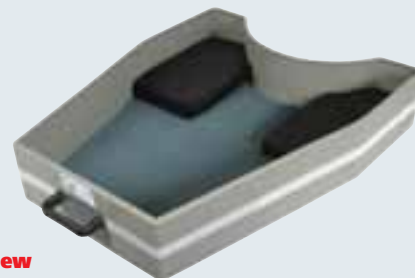
Technical Data

Insulated platform	Glass fibre reinforced plastic, 4 mm, light grey
Extension	Glass fibre reinforced rod, Ø16 mm, white
Operating temperature range	– 25° C ... + 55° C
Relative air humidity	≤ 90%



The GRP extension is used as insulating intermediate section when attaching the illuminant.

PROTECTIVE AND AUXILIARY EQUIPMENT



Type	Nominal voltage up to U_N	Part No.
------	-----------------------------	----------

A Insulated Platform IW
For beacons up to a diameter of max. 225 mm

IW 17.5 890 650 180	17.5 kV	785 408 new
---------------------	---------	--------------------

Accessories for Insulated Platform IW

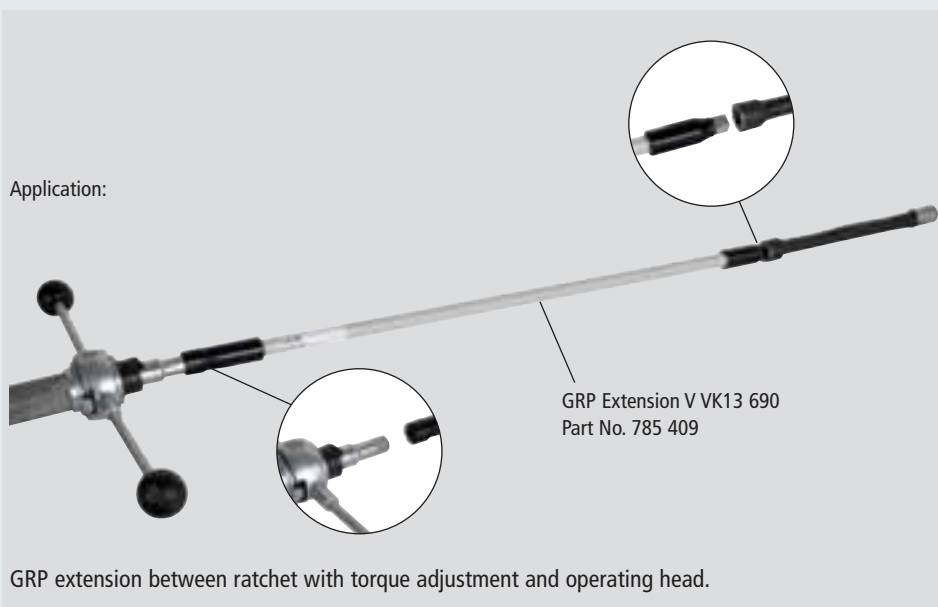
GRP Extension

Insulating intermediate section between ratchet (with 13 mm square) and operating head (17 mm socket)

Type	Length	Part No.
V VK13 690	690 mm	785 409 new



Application:



GRP extension between ratchet with torque adjustment and operating head.