

VOIS R+

Integrated Voltage indicating system
with relay output



Voltage detecting system for high voltage (VDS)

Integrated three phase capacitive voltage detecting system according to IEC 61243-5.

Relay output

Change-over contact for condition monitoring

No battery required

For voltage detecting no battery or external power supply is required.

Integrated 3-phase test point

Acc. to LR-specification in IEC 61243-5 to be used for phase comparison and phase sequence test.

Economical alternative

to plug-in voltage detectors



CAP-LINE

VOIS R+

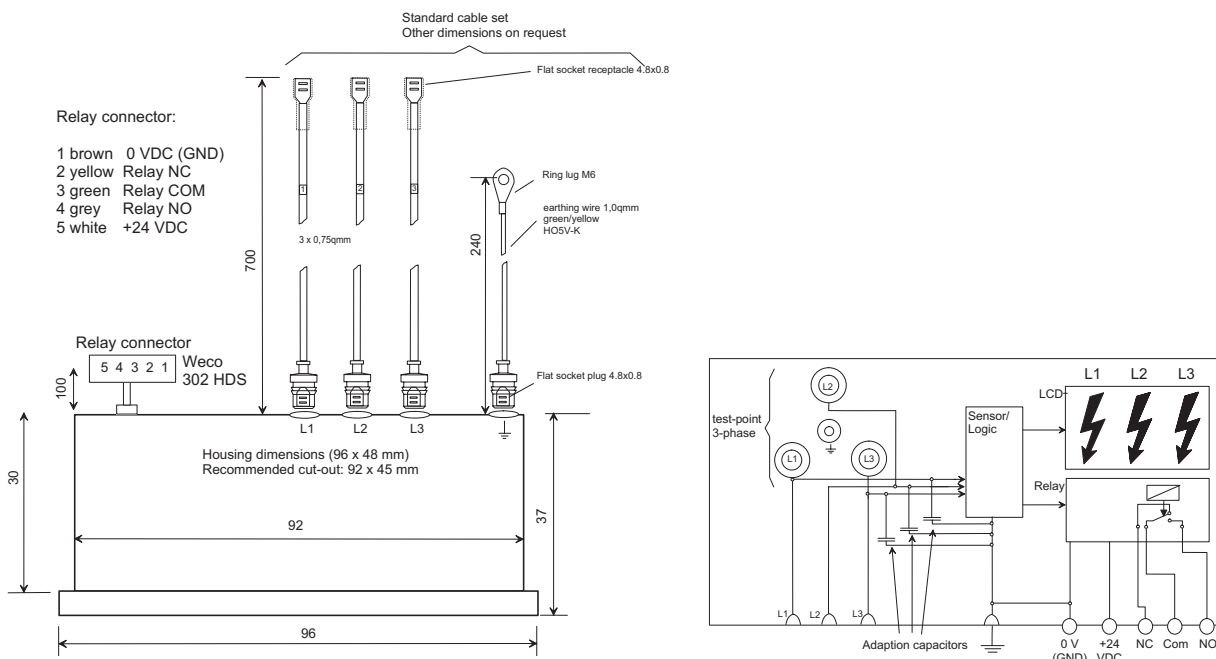
Integrated Voltage indicating system
with relay output

Technical data

Applied standard:	IEC 61243-5 (voltage detecting system)
Indication per phase:	$U < 10\%$ of U_N no voltage -> no indication $U > 10\%$ of U_N , voltage present -> arrow
Housing:	front panel mounting
Dimensions:	$h \times w \times d = 48 \times 96 \times 37$ mm
Recommended cut:	$h \times w = 45 \times 92$ mm
Operating temperature:	-25°C to $+55^\circ\text{C}$
Storage temperature:	-30°C to $+80^\circ\text{C}$
Protection class:	IP54
Auxiliary power:	24 V DC , 1VA, galvanically isolated
Suitable tester for phase comparison:	LRM acc. to IEC 61243-5 e.g. type CAP-PHASE
Required data for order:	capacitance of coupling electrode C1 rated voltage U_N

Part Number

2500091



Kries - Energietechnik GmbH & Co KG

Sandwiesen 19
D-71334 Waiblingen
www.kries.com

Telefon (++ 49) (0) 7151 96932 - 0
Telefax (++ 49) (0) 7151 96932-16
E - Mail service@kries.com

KRIES - 
ENERGIETECHNIK